

2023 Veterans Day Parade

De-Staging Maps

Important De-staging Safety Notes

New protective road barriers limit options for exiting the parade area.

Hazard: Pedestrians and Vehicles **congest** the road south of Indian School Road

Control Measures:

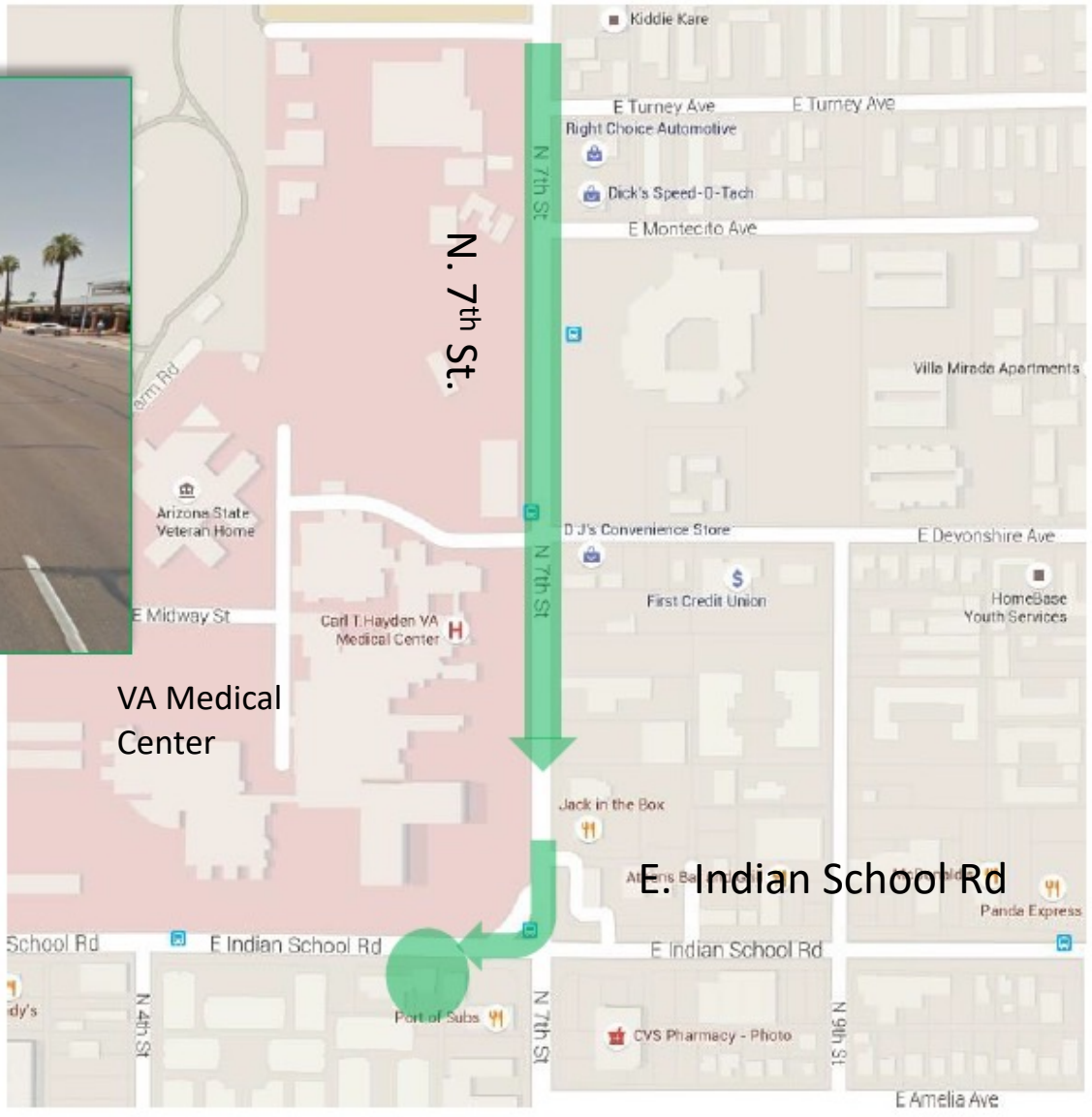
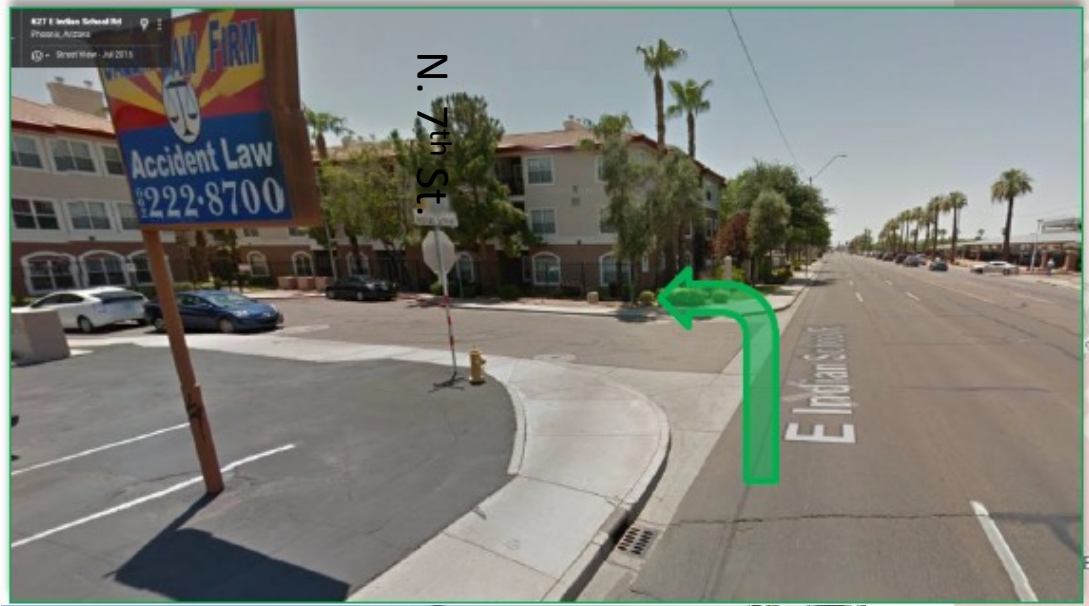
• **Pedestrians:**

- Quickly move to sidewalks after reaching end of parade.
- Do not load into vehicles while in the middle of the road. Move to sidewalk.
- Be mindful of moving vehicles. Most have blind spots and can't see you.
- Do not set equipment/instruments in the middle of the road.

• **Vehicles:**

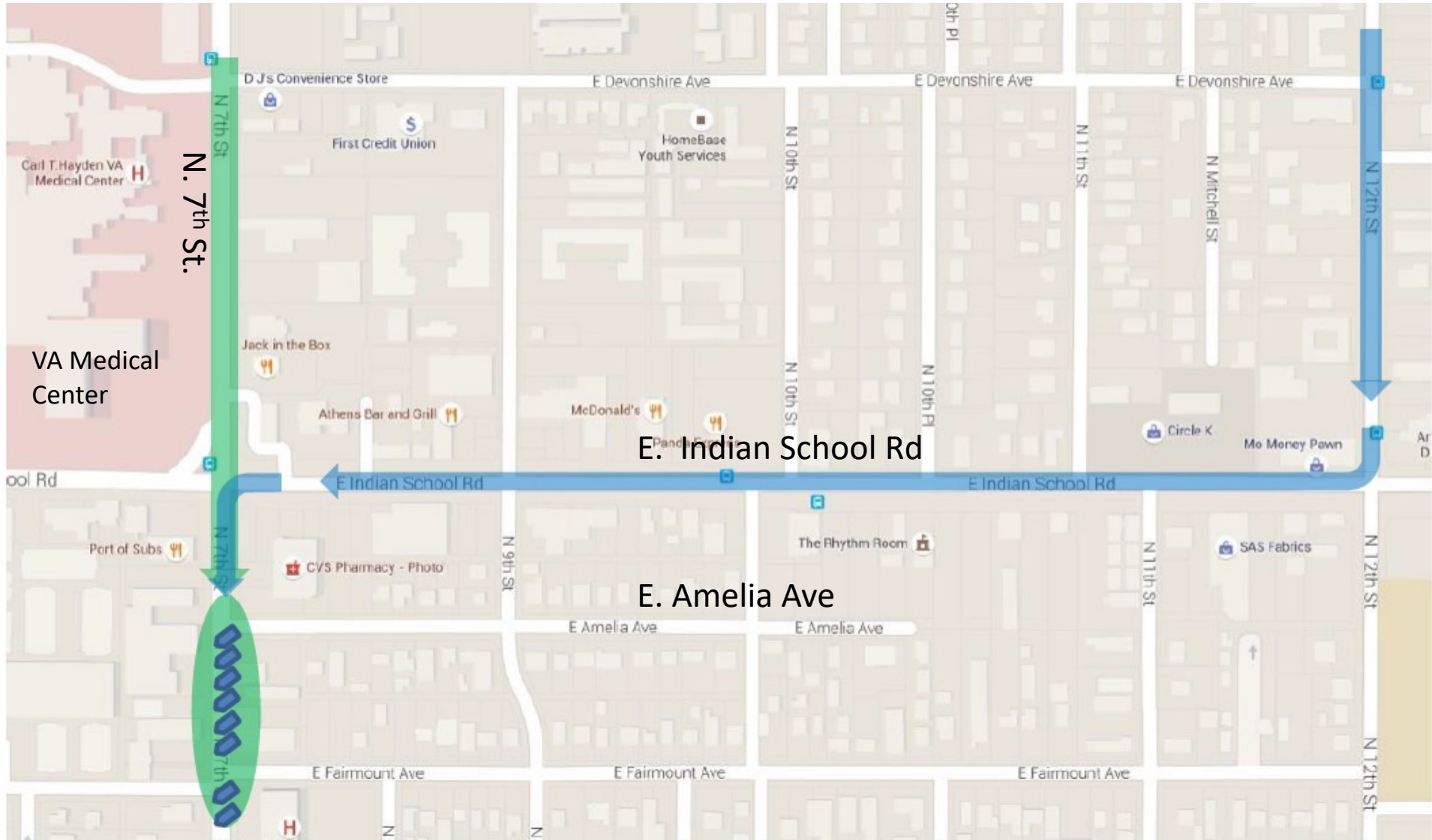
- Move slowly through de-staging. Use a ground guide through congested areas!
- If loading walkers into your vehicle, pull all the way through the end of parade route and to one side.
- Don't block the road! The parade continues behind you and quickly backs up.
- Never back up without a ground guide.

Giant Flag Destaging



U.S. Flag entry: turn right(west) on E. Indian School Rd and continue west to fold the flag on south side of Indian School Rd near law office

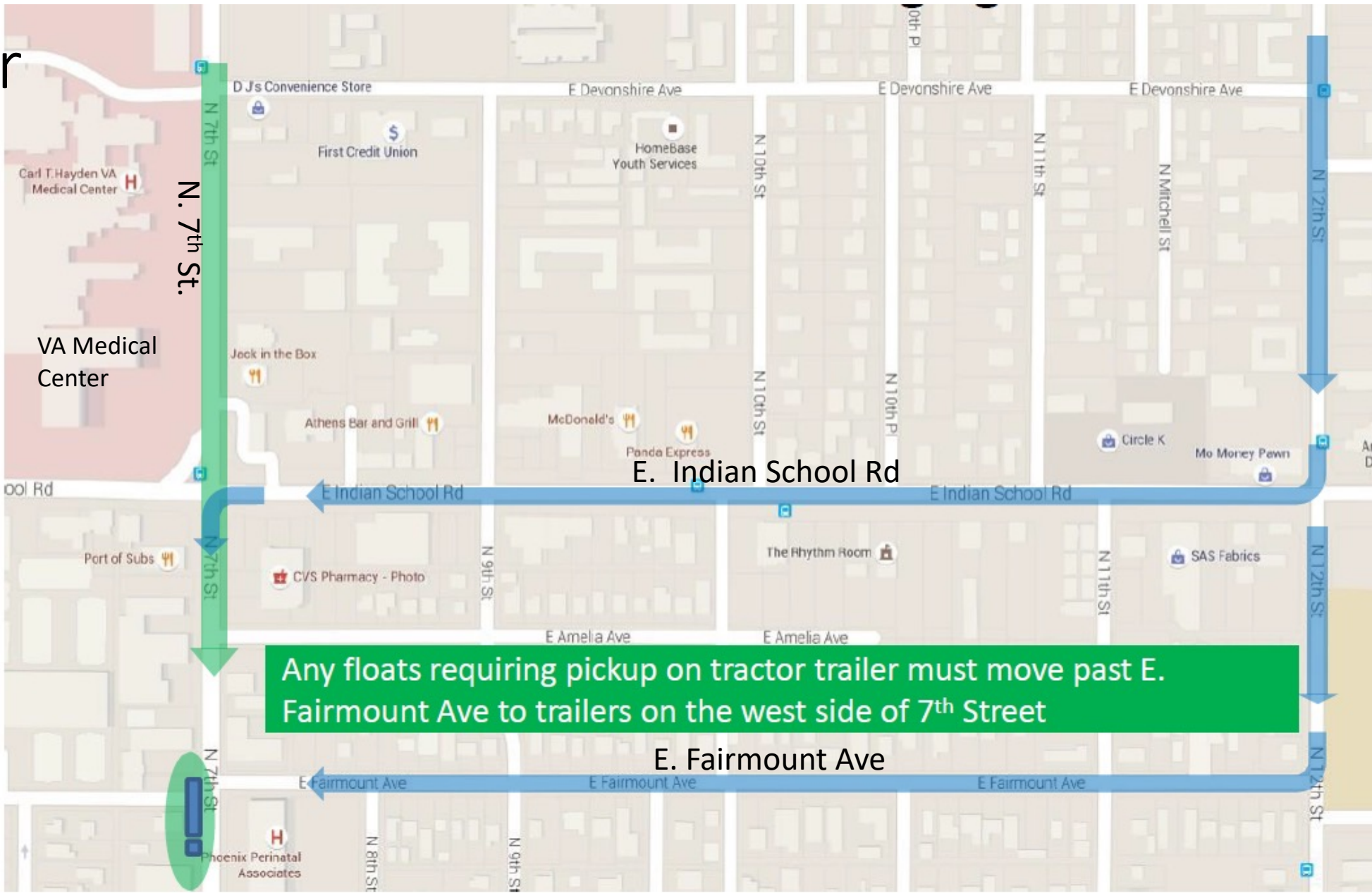
Band Buses Destaging



Band entries: continue south past Indian School Rd, buses are parked on east side of 7th St

Band Buses: after dropping off bands, take 12th Street to Indian School Rd then south on 7th street. Park diagonally on the east side of 7th Street facing southwest. Volunteers will assist you in backing. *If road is closed, inform traffic officer you're with the parade and need to park inside.

Tractor Trailer Destaging



After dropping off float at staging, take 12th Street to Indian School or E. Fairmount Ave, then south on 7th Street con. Look for volunteer to direct you.

Equestrian

And

Pedestrian entries
with vehicles in
Steele Indian
School School Park

Destaging



Entries with vehicles waiting in Steel Indian School parking lots: turn right(west) on E. Indian School Rd and continue west to 3rd St/ S. Herrera Way.

Prior to parade start, arrange for a vehicle to be left at Steel Indian School parking lot and transportation up to the staging area.

The best exit from Steele Indian Park until the parade ends is west on Indian School Road or South on 3rd Street. Expect traffic in both exit directions.

Vehicles leaving destaging areas



Most Entries in vehicles should leave the de-staging area by proceeding south to Osborne. If you have people who are walking beside your vehicle, do not stop at the end of the parade until you reach E. Fairmount Ave so that you don't impede parade traffic in the intersection.